

# Antenna Extension and Bracket

## User's Guide

Item # 3925

### Contents of Package (fig. 1)

- a. U-bolt assembly and saddle bracket with hole for antenna cable.
- b. 10 ft. (3m) extension cable with black o-ring on threaded end.

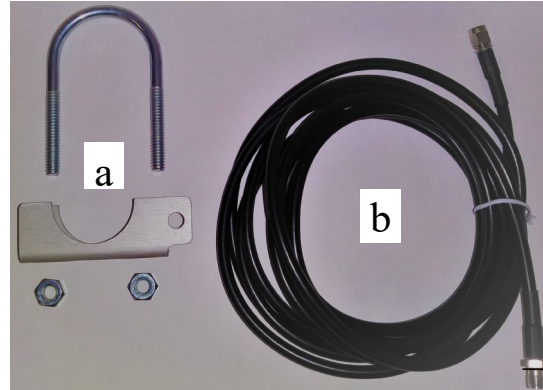


Figure 1: Package contents

The Antenna Extension and Bracket allows the antenna of a WatchDog Retriever or Pup to be extended, up to, 10 feet (3m) above the device. This makes it easier to establish line-of-sight with neighboring radio(s). The bracket attaches to a post or pipe using the U-bolt. The U-bolt can accommodate a post diameter of 1.37 inches (3.5 cm) or less.

### Connecting the Extension cable

The extension cable has two ends. The end with the moveable nut connects to the Retriever or Pup. The end with a fixed nut connects to the antenna.

1. Push the threaded end with the o-ring through the hole on the bracket flap (fig. 2).
2. Attach the antenna (fig. 3).
3. Attach the U-bolt assembly and antenna to the mounting pole (fig 4).
4. Deploy the mounting pole.
5. Connect the other end of the extension cable to the antenna connector on the Retriever or Pup.

It is advisable to secure the cable to the mounting post using zip ties or some other fastener.



Figure 2: Cable and saddle bracket



Figure 3: Antenna attached to cable

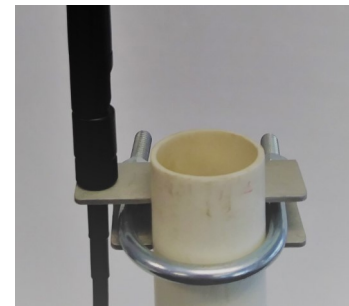


Figure 4: U-bolt assembly attached to post

**Spectrum Technologies**  
3600 Thayer Ct.  
Aurora, IL 60503  
(800) 248-8873 or (815) 436-4440  
Fax (815) 436-4460  
E-Mail: [info@specmeters.com](mailto:info@specmeters.com)  
[www.specmeters.com](http://www.specmeters.com)