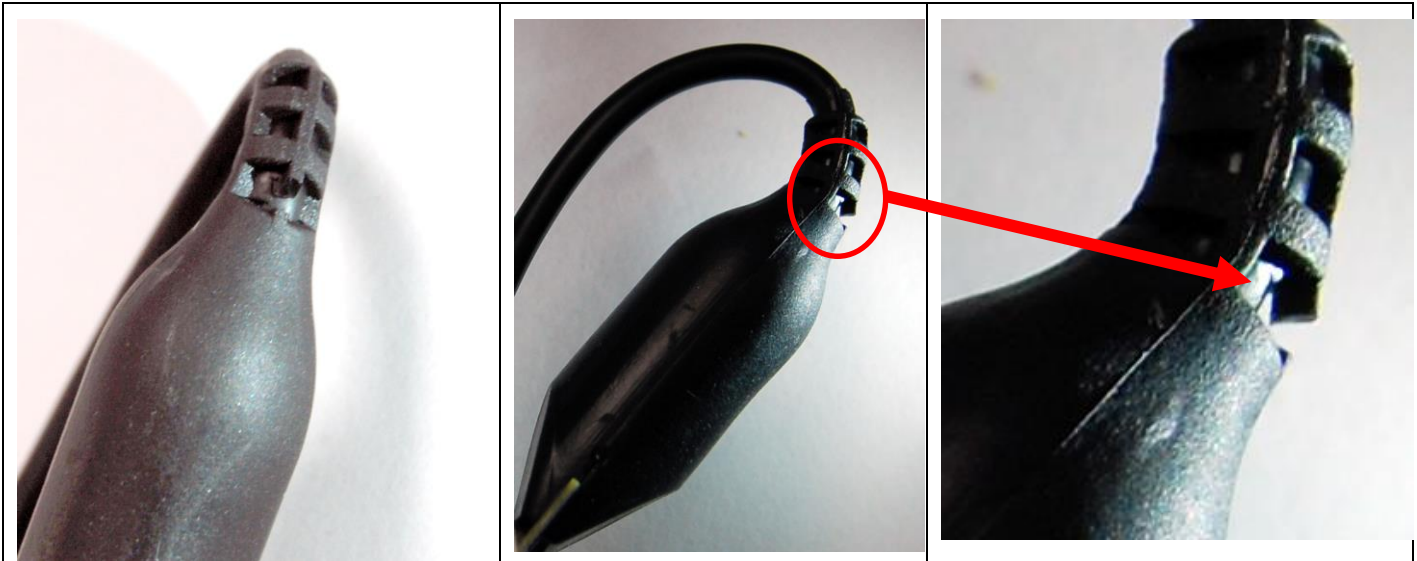


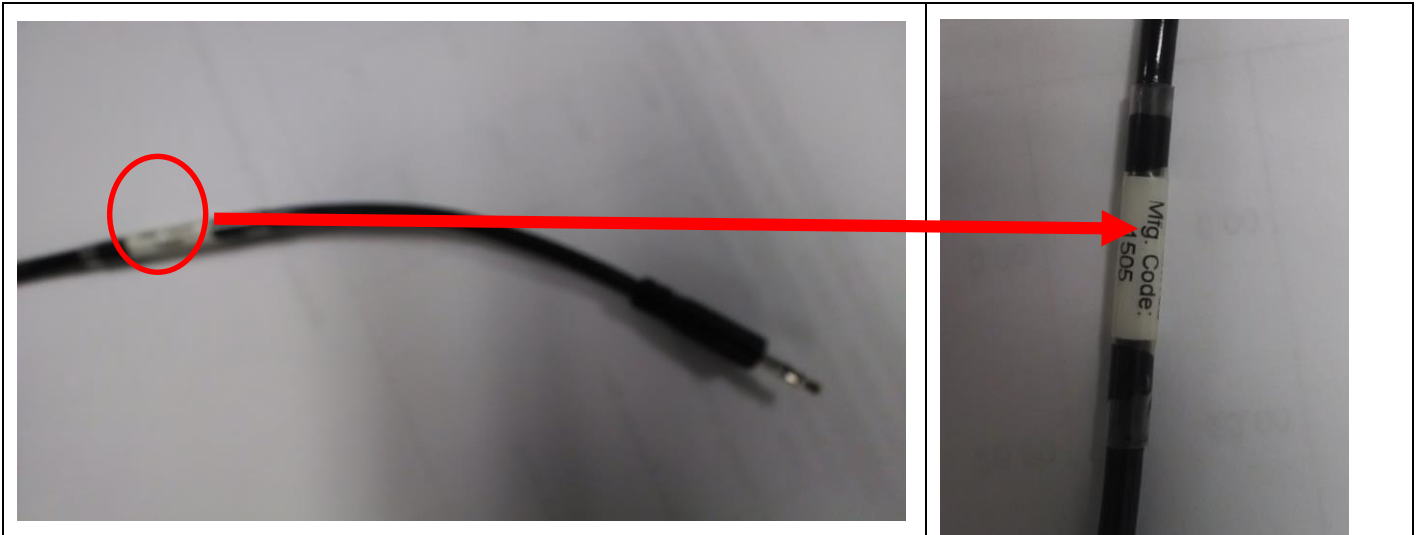
<b>Title:</b> SM100 Overmold	<b>Product:</b> 6460, 6460-20	7 Sept 15
------------------------------	-------------------------------	-----------

SM100 soil moisture sensors, both 6' and 20' have been found to have improper overmolding. The molded body exhibits cracking especially in the strain relief detail, where the cord exits the body. See example below.

In addition to being visually noticeable the cracking can cause incorrect readings. Unusually high readings, dashes "----", or constant 0 readings may indicate a problem with the sensor.



The sensors will also show MFG Code of 1505 or 1504 on the label.



The manufacturer of the overmolding has been contacted and a corrective action plan is in place to ensure this does not happen again. Devices exhibiting this issue should be returned and replaced.

<b>Prepared:</b> David Anderson	<b>Revision Date:</b> 9 SEP 2015
---------------------------------	----------------------------------